



GMT MONTHLY MEMBERSHIP PROGRESS REPORT

Results as of: 6/30/2025

Multiple District 22

LOCATION: MARYLAND

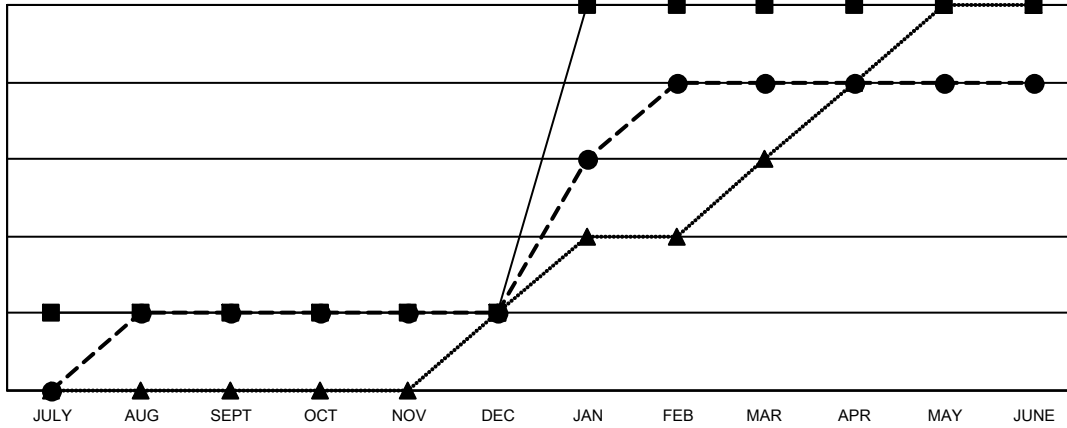
GMT: OPEN

GMT CA 1

Clubs			
RESULTS FOR 2024-2025			
QUARTER	NEW CLUB GOAL	NEW CLUBS	DROPPED CLUBS
JULY/AUG/SEPT	1	1	3
OCT/NOV/DEC	0	0	6
JAN/FEB/MAR	4	3	0
APR/MAY/JUNE	0	0	4

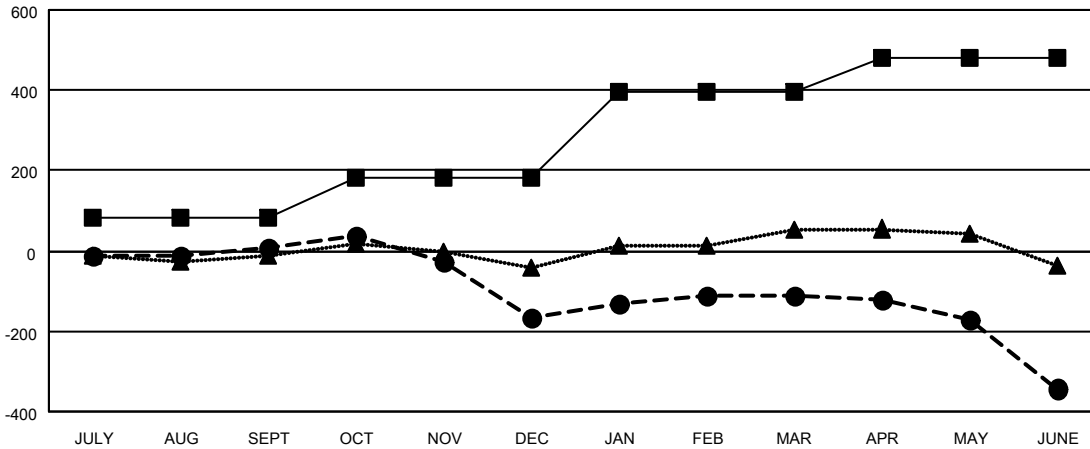
Members			
RESULTS FOR 2024-2025			
QUARTER	MEMBER GROWTH NET GOAL	MEMBER GROWTH ACTUAL	DROPPED MEMBERS ACTUAL (including transfers)
JULY/AUG/SEPT	81	157	130
OCT/NOV/DEC	102	117	280
JAN/FEB/MAR	212	223	143
APR/MAY/JUNE	87	164	362

GOALS AND ACTUAL NEW CLUBS CUMULATIVE



- - CURRENT YEAR GOALS FOR NEW CLUBS
- - CURRENT YEAR ACTUAL NEW CLUBS
- ▲ - LAST YEAR ACTUAL NEW CLUBS

GOALS AND ACTUAL MEMBERS CUMULATIVE



- - MEMBER GROWTH NET GOAL
- - MEMBER GROWTH ACTUAL
- ▲ - LAST YEAR MEMBERSHIP ACTUAL

DROPPED CLUBS: 13	109 CLUBS OF 202 ADDED 1 OR MORE NEW MEMBERS	GENDER DISTRIBUTION
		MALE 3,334 (60.51%)
		FEMALE 2,176 (39.49%)
DROPPED MEMBERS	CLICK HERE FOR CUMULATIVE MEMBERSHIP DATA	TOTAL FAMILY UNIT MEMBERS 1,092
DECEASED 123		FAMILY MEMBERS PAYING HALF DUES 570
CLUB CANCELLED 160		
OTHER 625		
TOTAL 908		